



DOME™ Building Automation Cybersecurity Starter Kit

Stop cyber attacks before they happen and protect building automation networks to the edge.

Key Features and Benefits

- Secures building automation devices to the edge of the network
- Device-level security and network traffic privacy
- Plug-and-play implementation
- Supports BACnet/IP and BACnet MS/TP devices
- Retrofits easily into existing networks and supports legacy devices
- Reduces the cyber attack surface by requiring all devices to be authenticated
- Provides real-time protection and prevents cyber attacks

Applications

- Commercial Buildings
- Retail Spaces
- Educational Facilities
- Hospitals
- Manufacturing Facilities
- Government Buildings

How to Order

To order by email:

IntelligentSolutions@arrow.com

For more information email:

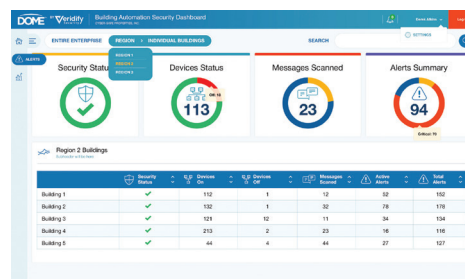
info@Veridify.com or

call 203.227.3151



Starter Kit Components

Each starter kit contains everything you need to provide basic protection for a building. The kit contains two DOME Sentry devices, one DOME Interface Appliance, and a license for DOME Server.



DOME Server

The DOME Server is a SaaS platform that provides a dashboard for device visibility, data logging, analytics, and alerts, and also provides a root-of-trust for every DOME device in a building.

DOME Interface Appliance (DIA)

The DIA is the local management and authentication device that is located on the OT network and connects to the cloud-based DOME Server for reporting and credential management. The DIA connects locally to building controls that have the DOME Client software built-in, or to DOME Sentry devices that provide security for existing building controls.

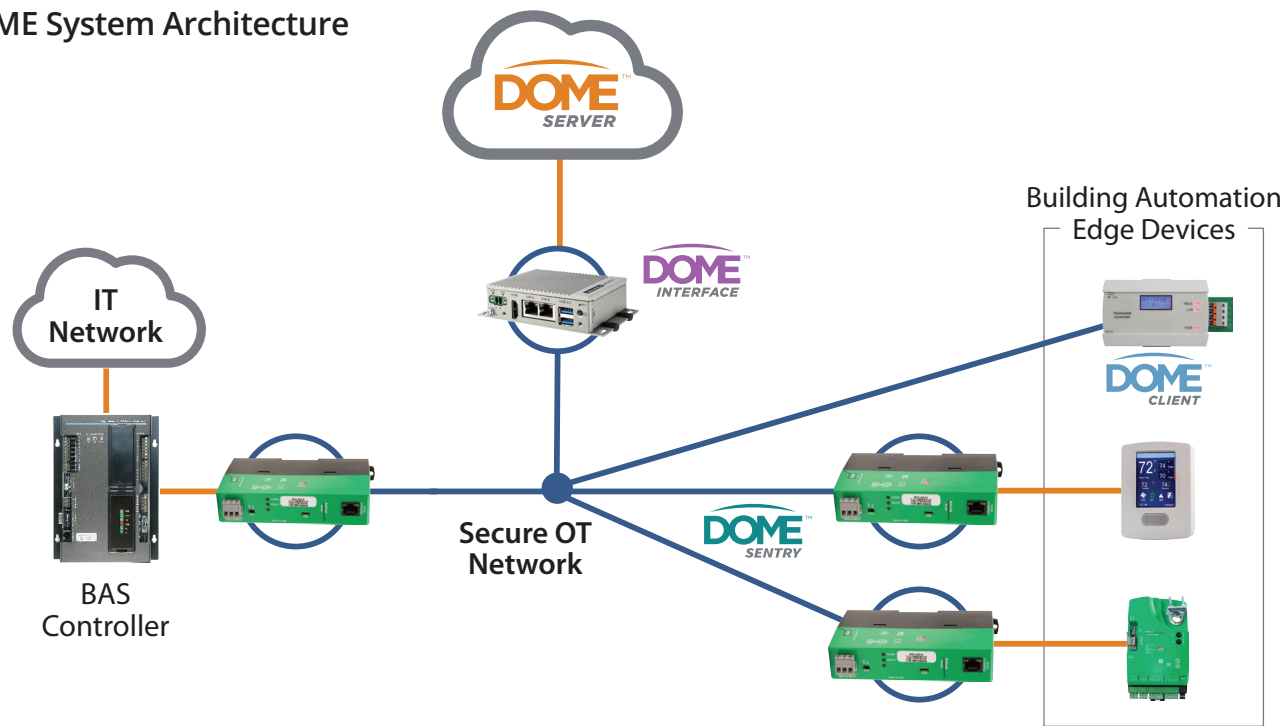
DOME Sentry

The DOME Sentry is the security appliance that protects connected devices such as controllers, sensors, and actuators. DOME Sentry devices automatically authenticate to each other and create a secure tunnel that protects all messages, commands, and data.

(Note: DOME Sentry software operates on multiple hardware platforms which are used to ensure availability. Some shipped units may look different than the image shown but are functionally equivalent.)



DOME System Architecture



Technical Specifications

	DOME Interface Appliance	DOME Sentry
Power	10-30 VDC	24 VAC
I/O	2 x Ethernet 2 x USB 3.2	2 or 3 Ethernet ports depending on model
Dimensions	3.9 x 2.8 x 1.2 in	3.9 x 6.75 x 1.6 in
Enclosure	Aluminum, IP30	Plastic
Mounting	Stand, wall, DIN rail (optional)	DIN rail or shelf
Operating Range	-4 to 140 °F / -20 to 60 °C	

How To Order

The Starter Kit can be ordered by contacting Arrow Intelligent Solutions, <https://www.arrow.com/AIS>

Description	Veridify Part #
DOME Starter Kit	DOME.KT.01.018
DOME DIA	DOME.DA.01.000
DOME Sentry	DOME.SY.00.018



To order by email:
IntelligentSolutions@arrow.com
For more information email:
info@Veridify.com or call 203.227.3151