

DOME™ Sentry

IoT/OT Cybersecurity Appliance

Retrofit Future-Proof Cybersecurity for IoT/OT Devices



Applications

- Building Automation
- Industrial IoT / ICS
- IP Video Surveillance
- Manufacturing
- Process Control

Key Features

- Zero-touch provisioning for quick and simple installation
- Mutual authentication to other authorized devices
- Protocol-agnostic to support numerous applications
- Data-logging for analytics and threat detection
- Crypto-agile for future-proof security

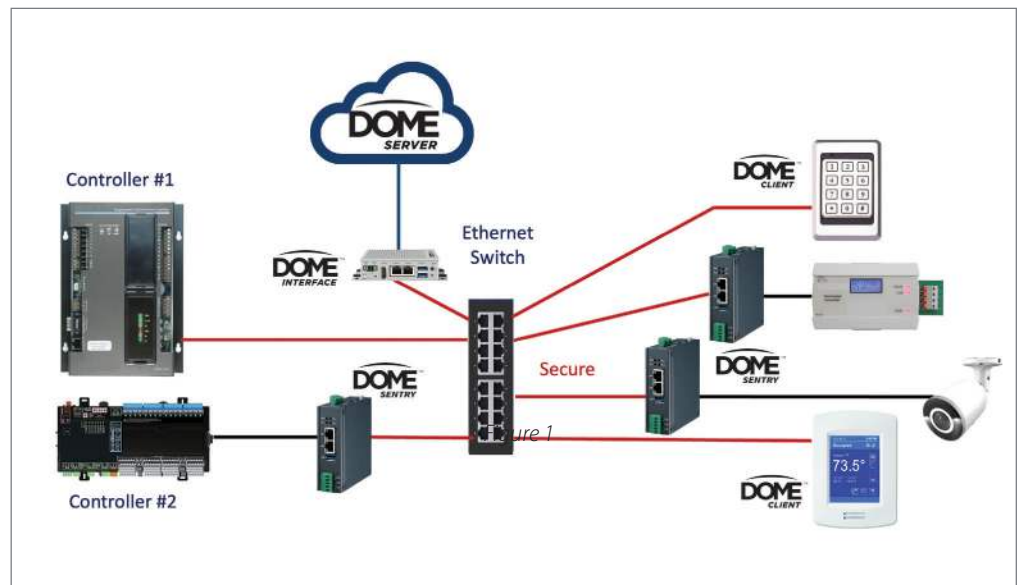
Key Benefits

- Real-time protection stops cyber attacks before they can happen
- Supports new and existing devices for easy add-on cybersecurity
- Blocks communication from unauthorized devices
- Prevents unauthorized replacement of protected devices
- No IT / Cyber expertise required to deploy and use

Product Overview

DOME is a SaaS-based cybersecurity solution for connected edge devices such as controllers, sensors, cameras, access control, actuators, and machines. DOME stops cyber attacks before they can happen and is a turnkey cybersecurity solution for easy deployment in new or existing networks. The DOME Sentry is a cybersecurity appliance for IoT/OT devices that do not have built-in security.

DOME Sentry enables retrofit cybersecurity by simply installing in front of existing devices, providing instant protection. As shown in Figure 1, a secure tunnel is established between a DOME Sentry and other authorized devices, and traffic between each device is encrypted to protect the data. Manufacturers can embed the DOME Client software into their devices for similar built-in security, and DOME Sentry can work with a mix of devices protected by DOME Sentry or DOME Client.



DOME Sentry Hardware and Software

The DOME Sentry hardware is available in several models to support various installation and environmental requirements. The DOME Sentry software has two versions – one version is for BACnet protocols and the other version is for a broad range of non-BACnet TCP/IP protocols typically used by industrial automation devices.



Sentry 201



Sentry 204



Sentry 205



Sentry 401

Model	101	201	204	205	401
Technical Specifications					
Ethernet Ports	2 x 10/100/1000Gbps	"1 x 10/100/1000Mbps, 1 x 10/100Mbps"	2 x 10/100/1000Mbps	3 x 10/100/1000Mbps	2 x 10/100/1000Mbps
Daisy-chain capable	No	No	No	Yes	No
Operating Temperature	0°C - 50°C	-20°C - 70°C	0°C - 70°C	0°C - 70°C	-40°C - 70°C
Power	24 VAC	5V DC	5V DC	5/9/12 VDC	10 - 30 VDC
Power Connector	Terminal block	micro-USB	USB-C	USB-C	Terminal block
Dimensions		62D x 55W x 30H mm	62.5D x 62.5W x 29H mm	68D x 94.5W x 30H mm	100H x 93D x 30W mm
Quantum Resistant Methods	Optional	Optional	Optional	Optional	Optional
AI Device Protection	N/A	Optional	Optional	Optional	Optional
Popular Protocols Supported (see website or contact Veridify for complete list)	BACnet IP, BACnet SC	BACnet IP, BACnet SC, Modbus TCP, EtherNet/IP, PROFINET, MQTT, SNMP	BACnet IP, BACnet SC, Modbus TCP, EtherNet/IP, PROFINET, MQTT, SNMP	BACnet IP, BACnet SC, Modbus TCP, EtherNet/IP, PROFINET, MQTT, SNMP	BACnet IP, BACnet SC, Modbus TCP, EtherNet/IP, PROFINET, MQTT, SNMP
Kit Part Numbers					
BACnet/IP					
Base software	DOMESY.00.018	DOMESY.00.021	DOMESY.00.024	DOMESY.00.025	DOMESY.00.041
including PQ	DOMESY.00.118	DOMESY.00.121	DOMESY.00.124	DOMESY.00.125	DOMESY.00.141
including AI	-	DOMESY.00.221	DOMESY.00.224	DOMESY.00.225	DOMESY.00.241
including AI and PQ	-	DOMESY.00.321	DOMESY.00.324	DOMESY.00.325	DOMESY.00.341
TCP/IP					
Base software	-	DOMESY.01.021	DOMESY.01.024	DOMESY.01.025	DOMESY.01.041
including PQ	-	DOMESY.01.121	DOMESY.01.124	DOMESY.01.125	DOMESY.01.141
including AI	-	DOMESY.01.221	DOMESY.01.224	DOMESY.01.225	DOMESY.01.241
including AI and PQ	-	DOMESY.01.321	DOMESY.01.324	DOMESY.01.325	DOMESY.01.341

* Quantum Resistant Algorithms secure against quantum and classic-based computing attacks

** Onboard AI Agent provides monitoring and cyber protection for the physical processing environment

